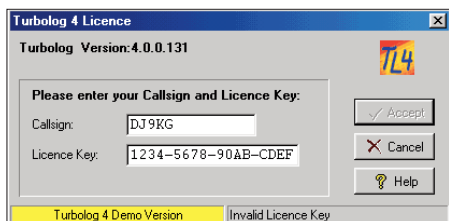
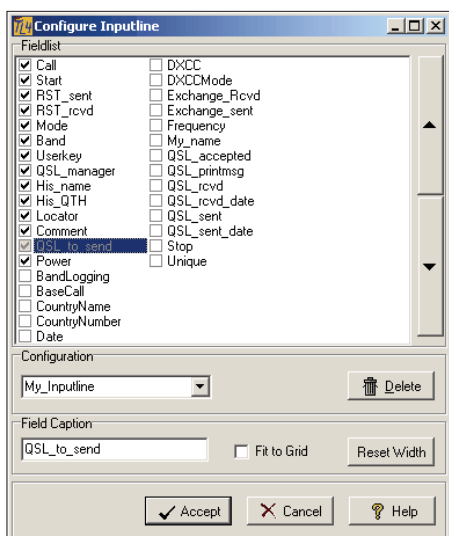


Ergänzung zum Beitrag Stationsmanagement mit TurboLog4 in FA 1/12 S. 18 ff.



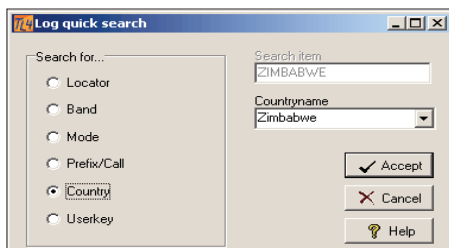
Call und Schlüsseleingabe



Konfiguration der Eingabezeile

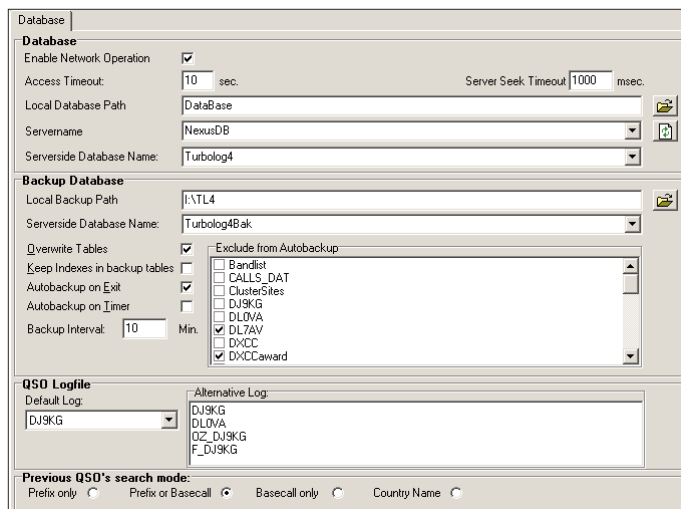


Kontextmenü unter der rechten Maustaste

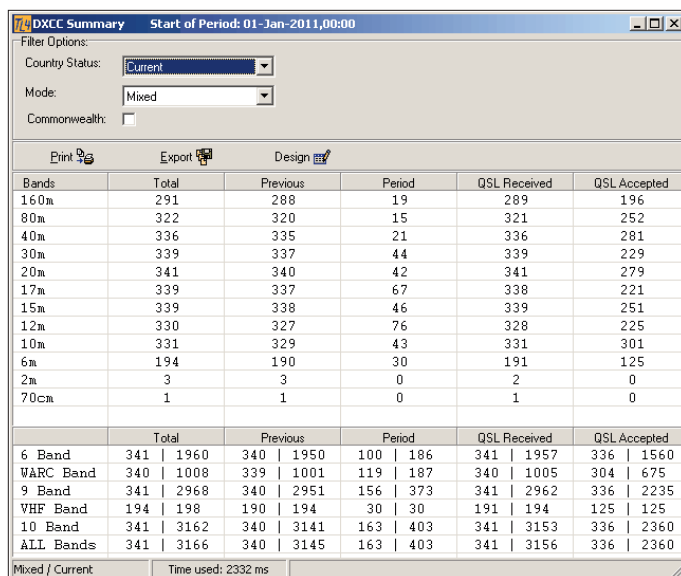


Kategorien für die Schnellsuche im Logbuch

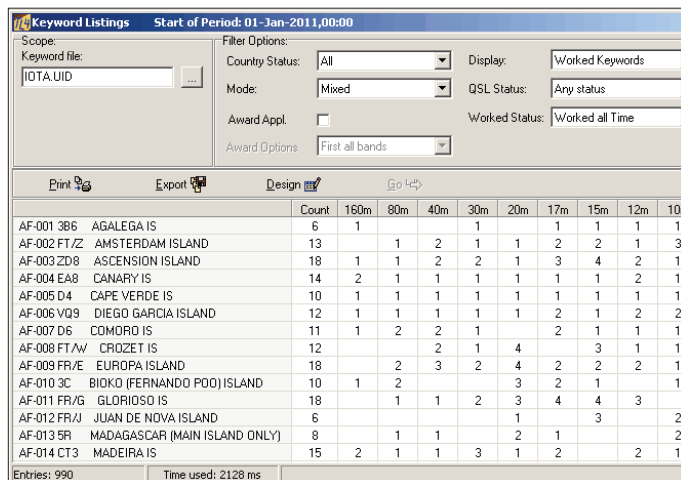
Einstellungen für Backup und Netzwerkbetrieb

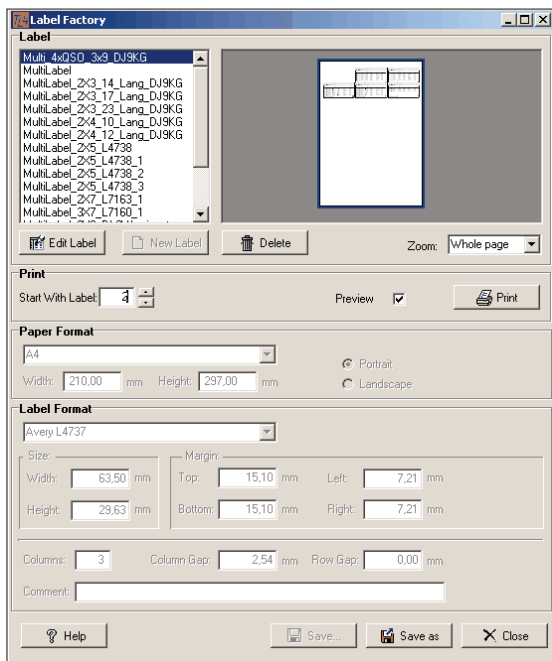


Kompakte Anzeige des aktuellen DXCC Standes



Gesamtschau der IOTA-Ergebnisse





Die Label Factory in TurboLog4

To Radio: TU2T					To Radio: TU2T				
Date	UTC	Band	Mode	RST	Date	UTC	Band	Mode	RST
28-Oct-2011	10:49	10m	CW	599	28-Oct-2011	21:26	40m	SSB	59
28-Oct-2011	12:22	12m	RTTY	599	29-Oct-2011	09:33	12m	CW	599
28-Oct-2011	15:09	12m	SSB	59	29-Oct-2011	11:31	17m	SSB	59
28-Oct-2011	21:10	30m	CW	599	30-Oct-2011	21:13	30m	RTTY	599
The QSO(s), v.v. 73: www.TurboLog.de					The QSO(s), v.v. 73: www.TurboLog.de				
To Radio: TU2T					To Radio: TU2T				
Date	UTC	Band	Mode	RST	Date	UTC	Band	Mode	RST
01-Nov-2011	06:11	17m	CW	599	02-Nov-2011	08:35	10m	RTTY	599
01-Nov-2011	18:07	15m	SSB	59	02-Nov-2011	17:59	17m	RTTY	599
01-Nov-2011	18:09	20m	CW	599	03-Nov-2011	10:01	15m	CW	599
01-Nov-2011	21:22	80m	SSB	59	03-Nov-2011	16:11	15m	RTTY	599
The QSO(s), v.v. 73: www.TurboLog.de					The QSO(s), v.v. 73: www.TurboLog.de				

Druck von Multi-QSO Etiketten

Screenshots: DJ9KG